



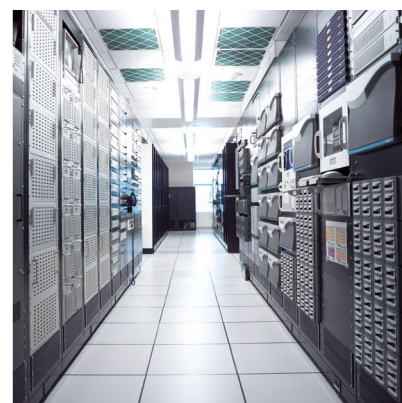
DVI KVM Switches

KVM Switches

Switches for the effective operations
of multiple computers via one workstation

DVIMUX-DL

Catalogue
V7.6



G&D IF IT'S KVM



The company

Experience the whole world of

KVM

G&D IF IT'S KVM

Guntermann & Drunk is regarded as a leading manufacturer of KVM equipment used in control rooms in air traffic control, broadcast studios, on ships and to monitor industrial processes.

With a powerful portfolio consisting of KVM extenders, switches and matrix switches, G&D's users get real added value. G&D provides the broadest KVM product portfolio at the market. Even with different features, all G&D products are compatible and can be combined. Our KVM solutions optimise the application of IT equipment and improve the working conditions for humans and computers.

No matter where KVM devices are installed, there's always one main requirement - robust, reliable, user-friendly and easy to operate KVM systems that can be adapted to future requirements and grow with your demands.

By short lines of communication G&D is able to solve challenging requirements and tailor systems to our customers' needs. We keep direct contact to our customers and are personally available. We are proactive and always keep an eye on the trends in the industry. Functionalities required by our customers are quickly implemented into our products. Our success can only be measured with our customers' satisfaction.

Trust in G&D for your optimal KVM solution.

The KVM switches DVIMUX-DL enable you to operate up to four computers over one user console.

The DVIMUX-DL switches the following signals:

- keyboard/mouse
- dual-link DVI and VGA
- audio
- USB 2.0

The DVIMUX4-DL devices are available as variants transmitting one, two, three or four video channels.

A working system consists of a DVIMUX-DL and the required computer connection cable sets.



DVIMUX4-DL-MC2-USB - front view

Highlights

Video

- mixed DVI/VGA operation on input and output side
- E-DDC support
- single- and multi-channel variants
- DVI dual-link 300 Mbps

Signals

- switches audio and transparent USB 2.0 signals
- USB and PS/2 keyboard/mouse support

Miscellaneous

- suitable for all operating systems
- external switching over RS232 possible

Features

Video

- DVI resolution up to 2560 × 1600 @ 60Hz or 2k x 2k @ 60Hz per channel
- VGA resolution up to 1920 × 1440 @ 75Hz or 2k x 2k @ 60 Hz per channel
- video bandwidth DVI dual-link 330 MP/s
- video bandwidth VGA up to 400 MHz
- digital colour mode 24 bit or analog
- backward-compatible to single-link
- DVIMUX2-DL & DVIMUX4-DL are 3D-capable with NVIDIA® 3D Vision™; resolution up to 1680 x 1050@120Hz

System upgrade

- update by flash upgrade at device

Devices

- only access standard computer interfaces
- no software installation required
- internal power supply
- available as desktop and rack mount variant
- housed in an aluminium casing for best interference resistance
- hot-pluggable

Variants

Design

- available as desktop (DT) variant
- USB 2.0 transparent

Video channels

- DVIMUX4-DL - Single-Channel, MC2, MC3, MC4

Expansion

The DVIMUX-DL devices are fully equipped.
Recently no expansions are available.

Installation

Connect the computers to the back side of the device.
Distinctive standard cables link keyboard, video, mouse, audio, and USB interfaces to the switch.

Cable length for USB cable sets: 2 m, 5 m

The user console is simply connected by linking keyboard, monitor, mouse, speakers, and USB devices to the intended interfaces.

Feel free to download the DVIMUX-DL manual to find out more details about the start-up.

DVIMUX4-DL-USB



General features of the series DVIMUX4-DL	
Number of video sources	
Per computer/console	see variant features
Console	
Connections per device	1
Connection	directly at the device
Interfaces for console	
Video	see variant features
USB keyboard/mouse	2 x USB-A jack
USB 2.0 devices	2 x USB-A jack
Audio	1 x 3,5 mm jack socket (Line In) 1 x 3,5 mm jack socket (Speaker)
Computer	
Connections per device	4
Connection	with optional cable sets at the devices
Interfaces for computer	
Video	see variant features
USB	4 x USB-B jack
Audio	4 x 3,5 mm jack socket (Line In) 4 x 3,5 mm jack socket (Line Out)
Video	
Signal type	DVI-I (analog and digital video)
Resolution (digital)	max. 2560 x 1600 @ 60 Hz
Resolution (analog)	max. 1920 x 1440 @ 75 Hz
Colour mode digital	24 Bit
DDC	Enhanced Display Data Channel
Mixed mode	supported (digital/analog)
Audio	
Type	analog
Bandwidth	22 kHz
Power supply	
Type	internal power pack
Connection	IEC socket (IEC-320 C14)
Power input	see variant features
Casing	
Material	anodised aluminium
Dimensions (W x H x D)	see variant features
Weight	see variant features
Operational environment	
Temperature	+5 to +45°C
Humidity	<80%, non-condensing
Conformity	
	CE, RoHs

DVIMUX4-DL-USB



Specific features DVIMUX4-DL-USB

Number of video sources

Per computer/console	1
----------------------	---

Interfaces for console

Video	1 x DVI-I socket
-------	------------------

Interfaces for computer

Video	4 x DVI-I socket
-------	------------------

Power supply

Current consumption (max.)	130mA@240VAC; 285mA@100VAC
----------------------------	----------------------------

Power consumption (max.)	17,4W@240VAC; 17,1W@100VAC
--------------------------	----------------------------

Casing

Dimensions (W x H x D)	270 x 44 x 210 mm
------------------------	-------------------

Weight	approx. 1,5 kg
--------	----------------

DVIMUX4-DL-MC2-USB



Specific features DVIMUX2-DL-MC2-USB

Number of video sources

Per computer/console	2
----------------------	---

Interfaces for console

Video	2 x DVI-I socket
-------	------------------

Interfaces for computer

Video	4 x 2 DVI-I sockets
-------	---------------------

Power supply

Current consumption (max.)	160mA@240VAC; 370mA@100VAC
----------------------------	----------------------------

Power consumption (max.)	22,6W@240VAC; 22,3W@100VAC
--------------------------	----------------------------

Casing

Dimensions (W x H x D)	270 x 66 x 210 mm
------------------------	-------------------

Weight	approx. 1,7 kg
--------	----------------

DVIMUX4-DL-MC3-USB



Specific features DVIMUX4-DL-MC3-USB	
Number of video sources	
Per computer/console	3
Interfaces for console	
Video	3 x DVI-I socket
Interfaces for computer	
Video	4 x DVI- sockets
Power supply	
Current consumption (max.)	200mA@240VAC; 511mA@100VAC
Power consumption (max.)	28,5W@240VAC; 28,5W@100VAC
Casing	
Dimensions (W x H x D)	270 x 88 x 210 mm
Weight	approx. 2,1 kg

DVIMUX4-DL-MC4-USB



Specific features DVIMUX2-DL-MC4-USB	
Number of video sources	
Per Computer/console	4
Interfaces for console	
Video	4 x DVI-I socket
Interfaces for computer	
Video	4 x 4 DVI- sockets
Power supply	
Current consumption (max.)	233mA@240VAC; 611mA@100VAC
Power consumption (max.)	33,8W@240VAC; 34,3W@100VAC
Casing	
Dimensions (W x H x D)	270 x 132 x 210 mm
Weight	approx. 2,5 kg

List of Item Numbers

Item No.	Description
A2100099	DVIMUX4-DL-USB
A2100104	DVIMUX4-DL-MC2-USB
A2100108	DVIMUX4-DL-MC3-USB
A2100112	DVIMUX4-DL-MC4-USB

Legend

ABBREVIATIONS

CPU = Computer module
PC = Computer module
CON = Console module
REM = Console module

MC2 = Multi-channel 2
MC3 = Multi-channel 3
MC4 = Multi-channel 4

M = Multimode
S = Singlemode
S+ = Singlemode+

RM = For assembly in a 19" rack
Desktop device
DT = Desktop device
DP = DisplayPort™

A = Audio
R = RS232
U = Integr. USB 2.0 up to 16 MBit/s
U2 = Transp. USB 2.0 Hi-Speed 480 Mbit/s
D = Delay

EQUIPMENT FEATURES



Audio



CAT cable



Compact setup



CrossDisplay-Switching



Delay



DisplayPort™



DVI dual link video



DVI single link video



Expansion



Fiber optics



High Definition Multimedia Interface



Keyboard/Mouse



KVM-over-IP™



Media control



Mix & Match



Modular setup



Monitoring



Multi user



Multi-channel video



Network connection



Power switching



Remote IP



RS232



Screen-Freeze



Separate local/remote user



Single user



USB 2.0



USB 3.0



VGA video



Web Interface

COLOUR CATEGORY



KVM extenders



KVM switches



Analog KVM matrix systems



Digital KVM matrix systems



Digital signage



KVM add-ons



Monitoring & SNMP



KVM MultiPower



Accessories

From professionals to professionals:

Trust in our professional solutions - from planning through to aftersales support.

Main office



Guntermann & Drunck GmbH
Systementwicklung
Obere Leimbach 9
D-57074 Siegen

Phone +49 271 23872-0
Fax +49 271 23872-120

sales@gdsys.de
www.gdsys.de

US office



G&D North America Inc.
4001 W. Alameda Avenue
Suite 100, Burbank, CA 91505

Phone +1-818-748-3383

sales@gd-northamerica.com
www.gd-northamerica.com



Follow us on:

