



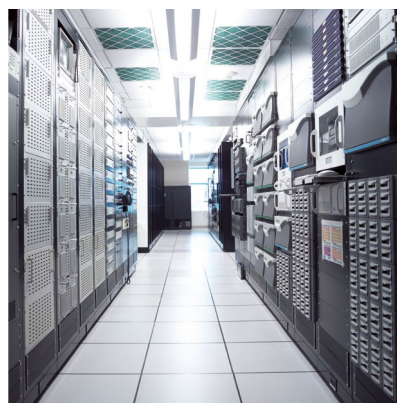
KVM add-ons

KVM add-Ons

Value adding solutions for your KVM and IT applications

RackConsole-PRO 17

Catalogue
V1.0



G&D IF IT'S KVM



The company

Experience the whole world of

KVM

G&D IF IT'S KVM

Guntermann & Drunk is regarded as a leading manufacturer of KVM equipment used in control rooms in air traffic control, broadcast studios, on ships and to monitor industrial processes.

With a powerful portfolio consisting of KVM extenders, switches and matrix switches, G&D's users get real added value. G&D provides the broadest KVM product portfolio at the market. Even with different features, all G&D products are compatible and can be combined. Our KVM solutions optimise the application of IT equipment and improve the working conditions for humans and computers.

No matter where KVM devices are installed, there's always one main requirement - robust, reliable, user-friendly and easy to operate KVM systems that can be adapted to future requirements and grow with your demands.

By short lines of communication G&D is able to solve challenging requirements and tailor systems to our customers' needs. We keep direct contact to our customers and are personally available. We are proactive and always keep an eye on the trends in the industry. Functionalities required by our customers are quickly implemented into our products. Our success can only be measured with our customers' satisfaction.

Trust in G&D for your optimal KVM solution.

The RackConsole-PRO 17HR enables direct access to servers mounted in a rack. The TFT keyboard drawer combines a high-quality display with a compact keyboard including a touchpad.

The display can process the image sources DisplayPort, DVI-D, DVI-A (VGA) and HDMI with resolutions up to 1920 x 1200 pixels.

- 17" display, visible 37 x 23 cm (rounded)
- compact keyboard including touchpad
- keyboard layouts for different languages
- requires only 1 U

The RackConsole-PRO is a stand-alone device and compatible with many G&D devices.



RackConsole-PRO 17HR

Features

Video

- 17" display
- Support of DisplayPort, DVI-D, DVI-A (VGA) and HDMI
- Resolutions up to 1920 x 1200 @ 60 Hz (WUXGA)
- 24 bit colour mode digital

Operation

- Mouse operation via internal touchpad
- On-screen display for operation and configuration
- Automatic switch-on/switch-off when opening/closing the display

Device

- USB interface for keyboard and mouse
- Transparent USB 3.0 interface at front panel
- Available in following layouts:
English US, English UK, Russian, German, Spanish, French, Nordish, Swiss German, Belgium French
- Touchpad included
- Ball-bearing telescopic rails
- Cable chain to protect the cables
- Easily accessible cable connections
- Requires only 1 U

Highlights

- Resolutions up to 1920 x 1200 @ 60Hz (WUXGA)
- Support of DisplayPort, DVI-D, DVI-A (VGA) and HDMI
- Requires only 1 U
- Comprehensive accessories such as telescopic rails, cable chain, pre-assembled brackets, and fasteners
- High reliability, failure safety, robustness

Variants

- Available in following layouts:
English US, English UK, Russian, German, Spanish, French, Nordish, Swiss German, Belgium French

RackConsole-PRO 17HR



RackConsole-PRO closed



RackConsole-PRO 17HR unclosed

| Technical details | |
|--------------------------------|--|
| Signals | |
| Image sources | DisplayPort, DVI-D, DVI-A (VGA), HDMI |
| Keyboard/Mouse | USB |
| Display | |
| Height | 17" |
| Technology | TFT-LCD with LED backlight |
| Resolution | 1920 × 1200 (WUXGA) |
| Refresh rate | 60 Hz |
| Pixel pitch | 0.1905 × 0.1905 mm |
| Colours | 24 bit (16.7 mio.) |
| Brightness | 600 cd/m ² |
| Contrast ratio | tpy. 2000:1 |
| Horizontal angle | + 88° /- 88° (ultra wide viewing angle) |
| Vertical angle | + 88° /- 88° (ultra wide viewing angle) |
| Backlight | LED |
| Response time | 20+9 ms |
| Housing | |
| Material | galvanized and powder-coated sheet steel |
| Dimensions | 483 × 44 × 628 mm (w × h × d) |
| Weight | approx. 15 kg |
| Cable routing | cable chain |
| Permissible installation depth | |
| Min. installation depth | 570 mm |
| Max. installation depth | 740 mm |
| Power supply | |
| Input voltage | 100-240 V AC, 60-50 Hz |
| Redundant power supply | external power adapter |
| Power input | |
| Operation | approx. 52 W (100 VAC: 52 W, 240 VAC: 51 W, 12 VDC: 51 W) |
| Standby | < 1 W |
| Current consumption | |
| 100-240 VAC | 1.1 A - 0.6 A |
| 12 VDC | 4.2 A |
| Conformity | |
| | CE, RoHS |

Numbers of items

| RackConsole-PRO 17HR | | |
|----------------------|-------------------------------|---|
| Item no. | Name | Description |
| A3200092 | RackConsole-PRO 17HR-US-USB | Keyboard drawer for rack assembly 19", keyboard layout US English |
| A3200091 | RackConsole-PRO 17HR-UK-USB | Keyboard drawer for rack assembly 19", keyboard layout UK English |
| A3200090 | RackConsole-PRO 17HR-RU-USB | Keyboard drawer for rack assembly 19", keyboard layout Russian |
| A3200086 | RackConsole-PRO 17HR-DE-USB | Keyboard drawer for rack assembly 19", keyboard layout German |
| A3200087 | RackConsole-PRO 17HR-ES-USB | Keyboard drawer for rack assembly 19", keyboard layout Spanish |
| A3200088 | RackConsole-PRO 17HR-FR-USB | Keyboard drawer for rack assembly 19", keyboard layout French |
| A3200089 | RackConsole-PRO 17HR-Nord-USB | Keyboard drawer for rack assembly 19", keyboard layout Nordish |
| A3200085 | RackConsole-PRO 17HR-CH+D-USB | Keyboard drawer for rack assembly 19", keyboard layout Swiss German |
| A3200084 | RackConsole-PRO 17HR-BE+F-USB | Keyboard drawer for rack assembly 19", keyboard layout Belgium French |

Legend

ABBREVIATIONS

CPU = Computer module
PC = Computer module
CON = Console module
REM = Console module

MC2 = Multi-channel 2
MC3 = Multi-channel 3
MC4 = Multi-channel 4

M = Multimode
S = Singlemode
S+ = Singlemode+

RM = For assembly in a 19" rack
Desktop device
DT = Desktop device
DP = DisplayPort™

A = Audio
R = RS232
U = Integr. USB 2.0 up to 16 MBit/s
U2 = Transp. USB 2.0 Hi-Speed 480 Mbit/s
D = Delay

EQUIPMENT FEATURES



Audio



CAT cable



Compact setup



CrossDisplay-Switching



Delay



DisplayPort™



DVI dual link video



DVI single link video



Expansion



Fiber optics



High Definition Multimedia Interface



Keyboard/Mouse



KVM-over-IP™



Media control



Mix & Match



Modular setup



Monitoring



Multi user



Multi-channel video



Network connection



Power switching



Remote IP



RS232



Screen-Freeze



Separate local/remote user



Single user



USB 2.0



USB 3.0



VGA video



Web Interface

COLOUR CATEGORY



KVM extenders



KVM switches



Analog KVM matrix systems



Digital KVM matrix systems



Digital signage



KVM add-ons



Monitoring & SNMP



KVM MultiPower



Accessories

From professionals to professionals:

Trust in our professional solutions - from planning through to aftersales support.

Main office



Guntermann & Drunck GmbH
Systementwicklung
Obere Leimbach 9
D-57074 Siegen

Phone +49 271 23872-0
Fax +49 271 23872-120

sales@gdsys.de
www.gdsys.de

US office



G&D North America Inc.
4001 W. Alameda Avenue
Suite 100, Burbank, CA 91505

Phone +1-818-748-3383

sales@gd-northamerica.com
www.gd-northamerica.com



Follow us on:

